

MAY 2026

THE POMEGRANATE

OFFICIAL NEWSLETTER OF ARIL

MAY NEWSLETTER

May is here, bringing warmer sunshine, longer days, and plenty of opportunities to grow, connect, and celebrate. This month, we also take time to recognize and appreciate the important people in our lives, especially during Mother's Day, a chance to show gratitude, kindness, and connection with those who support and care for us.

As we move through May, we encourage all persons served to stay focused on their personal goals and continue building independence in meaningful ways. Whether it's strengthening daily routines, improving budgeting skills, practicing communication, or exploring community activities, each step forward matters and builds confidence.

Let's make May a month of growth, appreciation, and continued success!



THIS ISSUE:

NEWSLETTER INTRO
PAGE 01

CALENDAR
PAGE 02

COMMUNITY EVENTS
PAGE 03-06

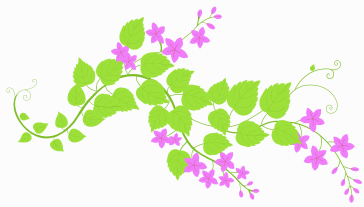
RECAP
PAGE 07

INSTAGRAM
PAGE 08

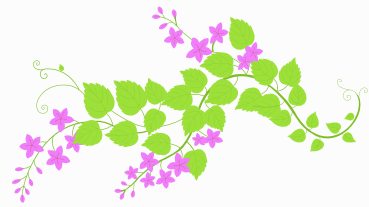
SERVICES
PAGE 09

SELF DETERMINATION
PAGE 10

CONTACT US / MORE
INFORMATION
PAGE 11



MAY



SUNDAY	MONDAY	TUESDAY	WEDNESDAY	THURSDAY	FRIDAY	SATURDAY
					1	2
3	4	5	6	7	8	9
10 	11	12 La Sierra Lib.- Adult Coloring 	13	14	15	16
17	18	19	20	21	22	23
24 31	25 Memorial Day  Office Closed	26	27	28	29	30 IRC Hosted- Field Day 

This is a tentative schedule; location, times, and dates may be changed at any time. Community events are not hosted or affiliated with ARIL. Please check for any updates on our with your DSP.



HAPPY Mother's DAY



COMMUNITY EVENTS

I Love SOMEONE RARE BENEFIT CONCERT

ONE CONCERT.
ONE CAUSE.
REAL IMPACT.



LIVE!

THE KALAMA BROTHERS

FRIDAY
MAY 22, 2026

7-9 P.M. PT
UNIVERSITY OF REDLANDS
MEMORIAL CHAPEL
(LIVESTREAM AVAILABLE)

Supporting research for Kleeftstra syndrome — a genetic cause of autism, intellectual disability, complex medical conditions, and loss of speech and essential developmental skills.

TOGETHER, WE CAN HELP
ADVANCE SCIENCE AND
BRING HOPE TO FAMILIES.



◀ GET TICKETS NOW

SCAN OR VISIT: GIVEBUTTER.COM/LOVECONCERT

DEFINE
The Kleeftstra Syndrome
Foundation

EVENT SPONSORS:



MAUPIN PAYNE
FINANCIAL ADVISORS



BARICH & ASSOCIATES



redlandsBARRE.

Please note, this event is hosted by a community partner, not ARIL or Inland Regional Center. It is highly recommended that you contact the event host to confirm dates, times, locations, etc. ADA or language accommodations, including American Sign Language (ASL), must be requested from the host agency by the participant.

COMMUNITY EVENTS

Storytimes @RPL



SPC. Jesus S. Duran Eastside Library Ameal Moore Nature Center
Fridays | 9:30am

Arlanza Library
Bilingual Storytime
Thursdays | 11am

Arlington Library
Baby Bee Storytime
Fridays | 11am
Family Storytime
Wed. May 13 | 3:30pm

La Sierra Library
Preschool Storytime
Wednesdays | 10am

Main Library
Preschool Storytime
Tuesdays | 9:30am

Twilight Tales
Wednesdays | 5pm
Baby Bee Storytime
Thursdays | 9:30am
Family Storytime
Saturdays | 9:30am

Marcy Library
Family Storytime
Tuesdays | 11am

Orange Terrace Library
Family Storytime
Thursdays | 11am

SPC. Jesus S. Duran Eastside Library at Lincoln Park
Preschool Storytime
Wednesdays | 11am
Family Storytime
Thursdays | 11am

SSgt. Salvador J. Lara Casa Blanca Library
Family Storytime
Wednesdays | 3:30pm
Babble Tales
Saturdays | 11am

Virtual
Mr. Brian's Virtual Storytime | May 3-9
tinyurl.com/3985rzs



Storytime Pause
May 16 - 29



Plant a Seed, Read!

Summer Reading Program



May 30 - July 31
All Ages

Log your reading,
earn PRIZES!

Sign up



Kick-off Events:
Sat. May 30

Illusions by Allen
11am | Marcy Library

Dino Party

2pm | Orange Terrace Library

Visit RiversideCA.gov/SRP
for more information.

8 LIBRARY LOCATIONS... ...INFINITE POSSIBILITIES

Arlanza Library
8267 Philbin Ave.
(951) 826-2217
Tues-Sat
10am-6pm

SSgt. Salvador J. Lara Casa Blanca Library
2985 Madison St.
(951) 826-2120
Tues-Sat
10am-6pm

La Sierra Library
4600 La Sierra Ave.
(951) 826-2461
Tues-Sat
10am-6pm

Main Library
3900 Mission Inn Ave.
(951) 826-5201
Tues-Th
10am-8pm
Fri-Sun
10am-6pm

Arlington Library
9556 Magnolia Ave.
(951) 826-2291
Tues-Sun
10am-6pm

SPC. Jesus S. Duran Eastside Library at Lincoln Park
4261 Park Ave.
Tues-Thurs
9:30am-1pm,
Fri 9:30-5:30pm

Marcy Library
6927 Magnolia Ave.
(951) 826-2078
Tues-Sat
10am-6pm

Orange Terrace Library
20010 - B Orange Terrace Pkwy.
(951) 826-2184
Tues-Sun
10am-6pm

Mobile Library Park Visits

Tuesdays & Wednesdays: Bordwell Park, 2:30-5:30pm

Thursdays: Bobby Bonds Park, 2:30-5:30pm

Fridays: Ameal Moore Nature Center, 9:30am-1pm

Saturdays: Lincoln Park, 10am-5:30pm

Connect with us!
RiversideCA.gov/library
@RivLibrary



MAY 2026
EVENTS

RIVERSIDE PUBLIC LIBRARY



CLOSED TUES. MAY 26
IN OBSERVANCE OF MEMORIAL DAY
REMINDER:
COOLING CENTERS ACTIVATE AT
97° OR HIGHER



ARLANZA LIBRARY

CHILDREN & FAMILY:

Toddler Play | Tues. May 5 & 12 | 11am
Relax & Color | Wed. May 6 & 13 | All day
Diversión con Cuentos y Bailes | Thurs. May 21 | 11am
Family Fun with Lotería ¡Diversión Para la Familia con Lotería! | Thurs. May 28 | 11am

TEEN:
STREAM | Tues. May 12 | 4pm

ADULT:
Basic Tech for Seniors | Wed. May 6 & 13 | 11am
Sewing Skills | Sat. May 9 | 11am



EASTSIDE LIBRARY AT LINCOLN PARK

CHILDREN & FAMILY:

Mother's Day Craft | Wed. May 6 | 11am

ADULT:
Senior Tech Hour | Fri. May 1, 8, & 15 | 11am

ALL AGES:
Family Coloring | Thurs. May 7, 14, 21, 28 | All day
Family Puzzle Time | Fri. May 1, 8, & 15 | All day
Chess Club | Sat. 2 & 9 | 3pm
National Paper Airplane Day | Wed. May 27 | All day



ARLINGTON LIBRARY

CHILDREN & FAMILY:

Preschool Playdate | Tues. May 5 & 12 | 11am
Bubble Painting | Wed. May 6 | 3:30pm

TEEN:
Puzzle Time! | Thurs. May 7 & 14 | All day
Pressed Flower Bookmarks | Sat. May 9 | 3pm

ADULT:
Tech Assistance for Seniors | Fri. May 1 & 15 | 3:30pm
Movie Matinee | Thurs. May 7 | 3pm
Pressed Flower Bookmarks | Sat. May 9 | 3pm
Take & Make Craft | Thurs. May 14 | All day

ALL AGES:
Take & Make Craft: Leis | May 12-15 | All day



MAIN LIBRARY

CHILDREN & FAMILY:

Crafting Corner | Wed. May 6 & 13 | 3pm
Color, Trace, Draw | May 3-9 | All day
First Sunday: Museum of Riverside presents: Tide Pool | Sun. May 3 | 1-4pm
First Sunday: Ocean Themed Crafts | Sun. May 3 | 1-4pm

ADULTS:
Tech-nically Senior | Tues. May 6 | 1-2pm
The Literati: Book Club | Sat. May 9 | 4pm



LA SIERRA LIBRARY

CHILDREN & FAMILY:

Writing Boxes | Thurs. May 7 & 14 | 4pm
Art Play - Garden Aprons | Fri. May 10 | 10am

TEEN:
Teen Zone | Wed. May 6 | 3:30pm

ADULT:
Adult Coloring | May 5 & 12 | All day
Adult Tech Hour | Fri. May 1 | 4pm



MARCY LIBRARY

CHILDREN & FAMILY:

Cryptid Scavenger Hunt | Sat. May 2 | All day
Mother's Day Activity | Wed. May 6 | 3pm
Arte y Amigos: How I Feel | Thurs. May 7 | 4pm

Children's Book Week-DIY Pop-Ups | Sat. May 9 | 2pm

Flower Crowns | Thurs. May 14 | 4pm
Performer: Illusions by Allen | Sat. May 30 | 11am

TEEN:
No Filler Anime Club: Nana | Wed. May 13 | 4pm

ADULT:
No Filler Anime Club: Nana | Wed. May 13 | 4pm

ALL AGES:
Shrek-lacular! | Thurs. May 21 | 4pm



CASA BLANCA LIBRARY

CHILDREN & FAMILY:

Community Coloring | Fri. May 1, 8, & 15 | All day
STREAM | Fri. May 1, 8, & 15 | 3:30pm
RPV STEAM Day | Tues., May 19 | 2-5pm

TEEN:
D & D | Sat. May 2, 16, 30 | 3-5:45pm
DIY Purse Charms | Tues. May 12 | 3pm

ADULT:
Senior Tech Help | May 7 & 14 | 3pm
Pressed Flower Wall Art (Registration Required) | Sat. May 9 | 3pm



ORANGE TERRACE LIBRARY

CHILDREN & FAMILY:

Lego Club | Tues. May 5 & 12; Fri. May 1, 8, & 15 | 10am-12pm

TEEN:
BrainSTEM: Ice Cold Experiments | Tues. May 12 | 3-4:30pm

ADULT:
Scrap N' Yap | Sat. May 2 | 11am
Henna Art (Registration Required) | Sat. May 2 | 3pm
Tech Help for Seniors | Fri. May 8 | 4pm
Mother's Day Tote Bag Painting (Registration Required) | Sat. May 9 | 3-4:30pm

ALL AGES:
Chess Club | Fri. May 1, 8, & 15 | 2-4pm
Star Wars Movie Day | Thurs. May 7 | 3-5pm
Dino Party | Sat. May 30 | 2pm



COMMUNITY EVENTS

DDS

SAVE THE DATE: DEAFPLUS EVENTS

These events are sponsored by Language Access and Cultural Competency Funds.



Field Day

Age Group: IRC Clients, Their Families & Deaf Community Members of All Ages

Celebrate spring at Field Day! Enjoy fun, inclusive activities that encourage movement, play, and connection. Whether you're running, rolling, or cheering, there's something for all ages and abilities. Come join the fun and good vibes!



Questions about the event? Contact Estefanía Peña Email: espena@inlandrc.org Phone: (909) 332-3639



Please note, this event is not hosted by ARIL. It is highly recommended that you contact the event host to confirm dates, times, locations, etc. ADA or language accommodations, including American Sign Language (ASL), must be requested from the host agency by the participant.

LOOK AHEAD: COMMUNITY EVENTS



Mark your calendar for a day of fun, connection, and community at the 4th Annual IncredABLES Family Fun Day, formerly known as the Adaptive Sports Fair! This exciting event will take place on Saturday, June 13, from 11:00 a.m. to 2:00 p.m. at Central Park. IncredABLES Family Fun Day is an interactive and inclusive celebration designed to bring the community together while highlighting activities and resources for individuals with cognitive and physical disabilities.

Open to participants ages 6 and up, the event welcomes everyone, from young children to adults, and encourages family members and friends to join the experience. Attendees can look forward to a variety of engaging activities, including sports and recreation opportunities, on-site informational vendors, appearances by local mascots, fun photo opportunities, and a selection of food vendors. Whether you're looking to learn, play, or simply connect, this event offers something for everyone in a welcoming and supportive environment.

Please note, this event is not hosted by ARIL. It is highly recommended that you contact the event host to confirm dates, times, locations, etc.

https://anc.apm.activecommunities.com/cityofrc/activity/search/detail/22031?onlineSiteId=0&locale=en-US&from_original_cui=true

APRIL RECAP

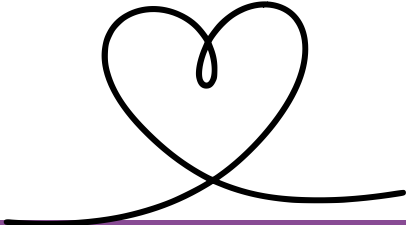


*"However
difficult life may
seem, there is
always something
you can do and
succeed at."*

STEPHEN HAWKING



We sincerely thank all the individuals we serve and their families for their ongoing support. Your continued participation and dedication to the ARIL program are truly appreciated!



Follow ARIL On Instagram!



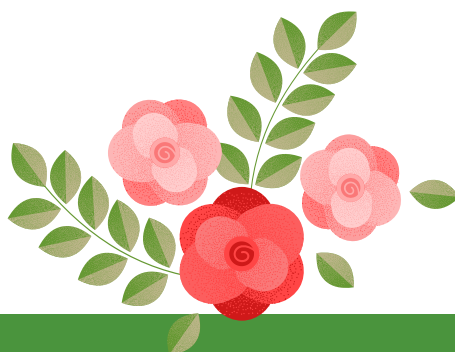
@A.R.I.L._ILS 

Services

ARIL offers in-person services that are face-to-face in the family home or the community.

ARIL follows all safety precautions recommended by the CDC and California state policies when working with our persons served. ARIL is proud to have all our sessions in person!

If you have any questions, please call our office at 909-843-2011



Self Determination Services

The Self-Determination Program (SDP) with Inland Regional Center (IRC) offers individuals with developmental disabilities greater control, flexibility, and choice in how they receive services and supports, compared to traditional IRC services. Under the SDP, participants receive an individualized budget based on their assessed needs and can choose service providers who do not have to be vendorized with IRC, giving them the freedom to design a customized plan that reflects their personal goals, cultural background, and lifestyle.

In contrast, traditional IRC services follow a more standardized approach, where case managers coordinate services through vendored providers within a structured system. While both models aim to support individuals in living fulfilling lives, the Self-Determination Program empowers participants with more autonomy and person-centered planning.



ARIL

ADVANCED RESOURCES
FOR INDEPENDENT LEARNING

Our Services



Independent Living Skills
(ILS)



Supported Living Skills (SLS)



Social Recreation (SRA)



Self Determination Program
(SDP)



Personal Assistance Program (Pending)

Contact



909-843-2011
714-643-3541 (after hours)



DirectSupport@arildsp.com



www.arildsp.com

Regular Office Hours: M-F 8am-4:30pm

ARIL

About Us

ARIL is a vendor of Inland Regional Center (IRC) and provides services in the San Bernardino and Riverside counties. Our direct support service provides independent living skills training and teaching to adults with developmental delays. We have programs which include Independent Living, Supported Living Services, and Social Recreation Services. We provide these services both traditionally with IRC and through Self Determination. Check out our website for updates and program changes.

Why Choose Us

ARIL is goal-oriented and focuses on working with our persons served to set and accomplish realistic goals to improve their life skills. Our Direct Support Professionals (DSPs) are trained to help person served achieve success and independence in their daily lives. With the use of an Individual Service Plan, we are able to track progress and completion of goals!